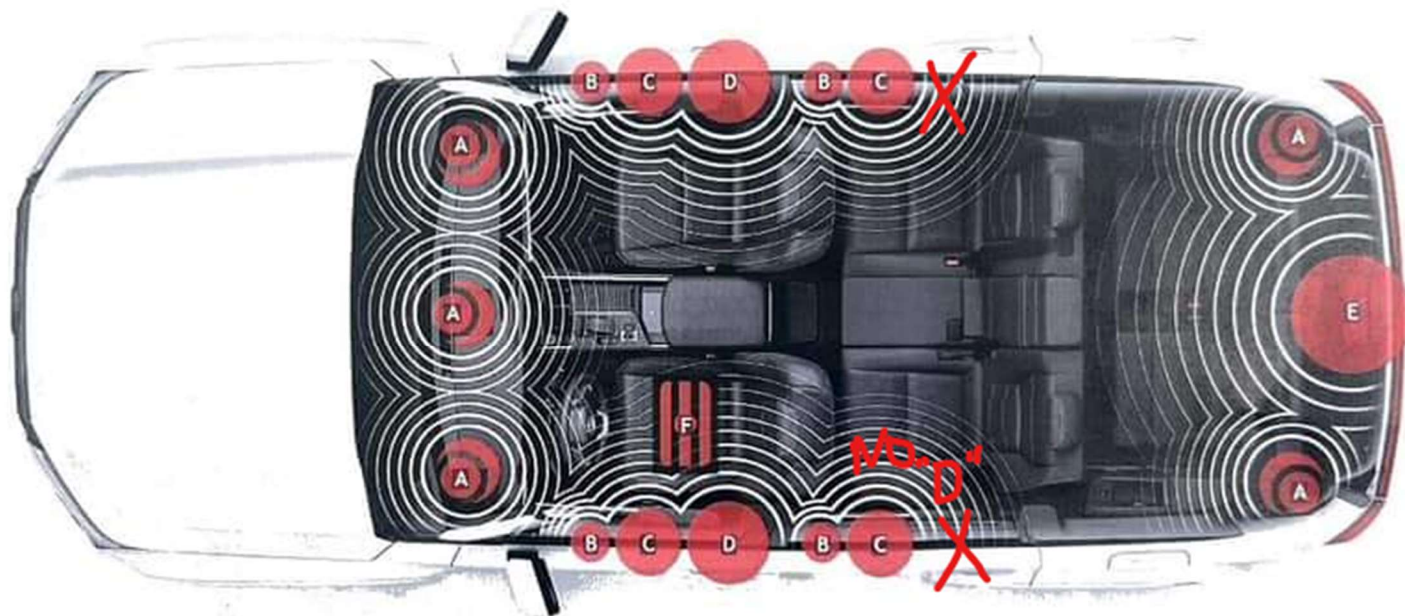


# GX

MARK LEVINSON  
SURROUND

- 21 Speakers
- 1,800 Watts Amplified Power
- 12-channel ML12 Amplifier

mark  
levinson



## SYSTEM OVERVIEW

- A. 90-mm Unity™ speakers
  - 1.6-cm tweeter
  - 9-cm midrange
- B. 25mm tweeters
- C. 90mm midrange
- D. 8 x 9-in woofers
- E. 224-mm subwoofer
- F. 1,800 watt, 12-channel amplifier



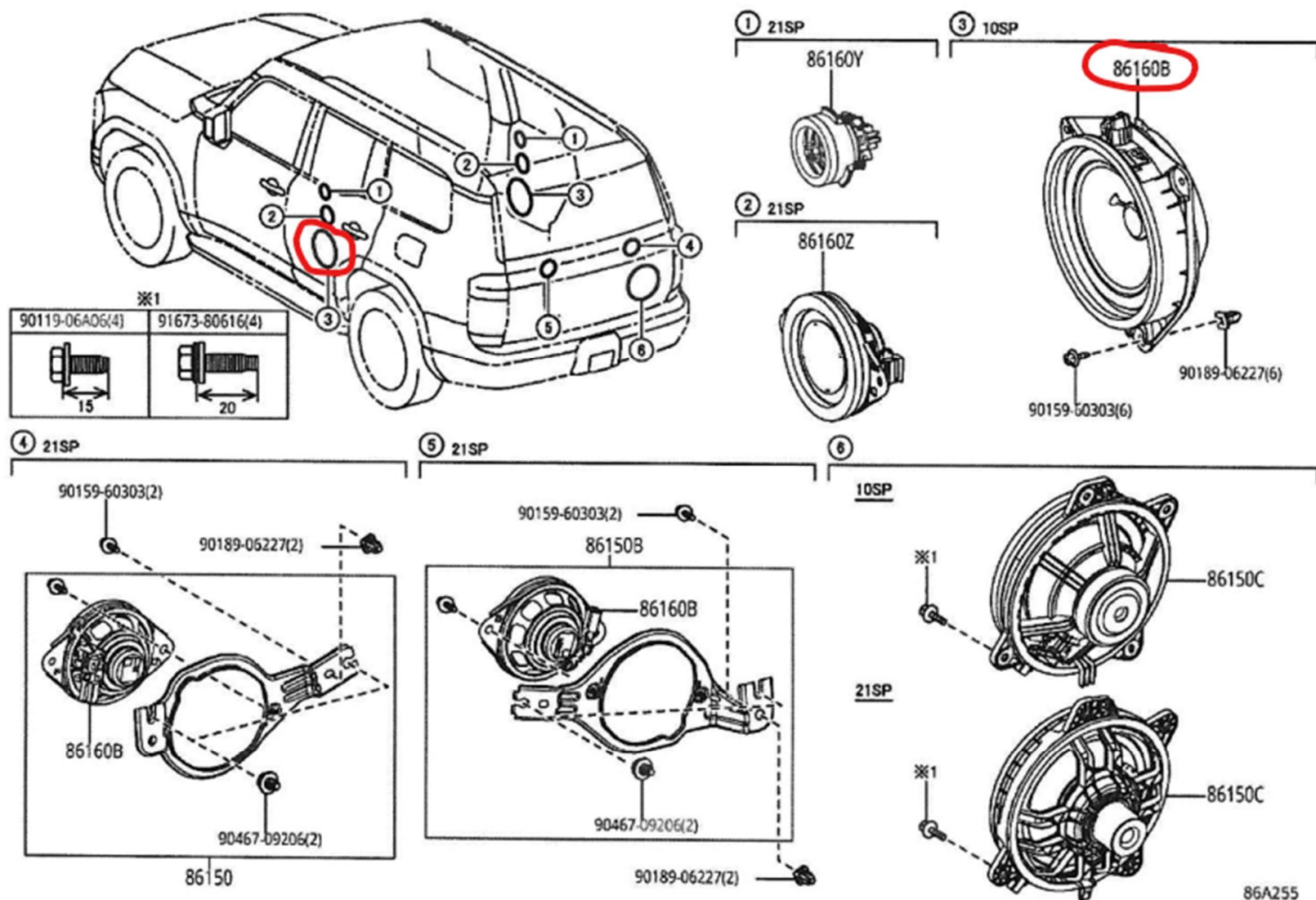
With Hi-Res audio support, your Mark Levinson system can provide the highest resolution of music possible. Delivering more than twice the depth and detail of CD sources, this lossless and uncompressed technology enables you to experience the full range of sound as it was mastered.

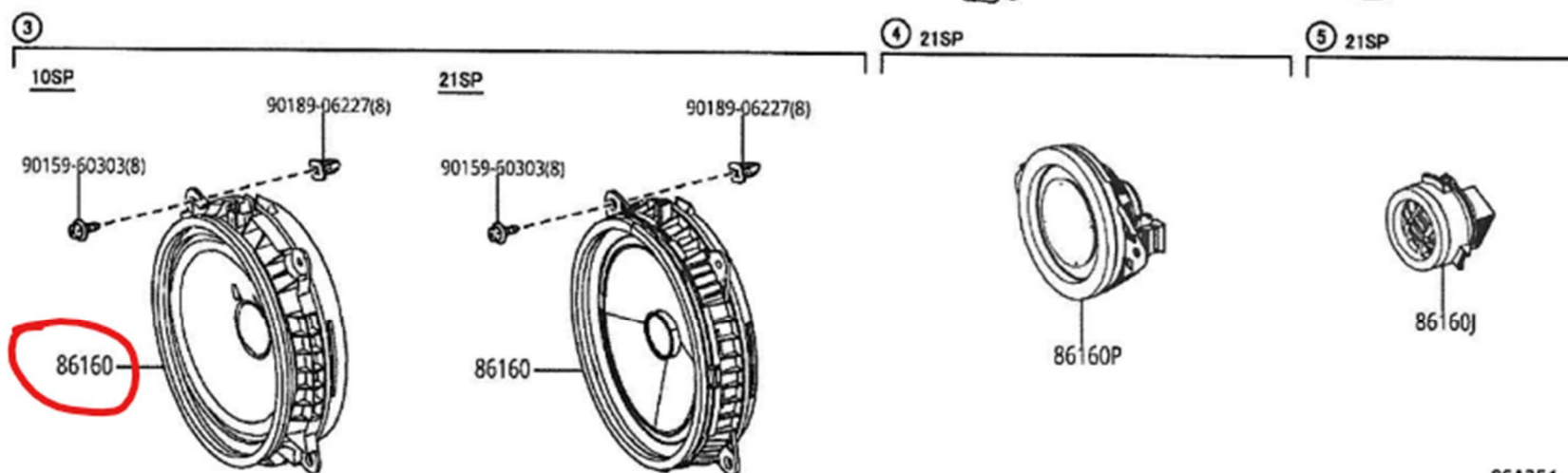
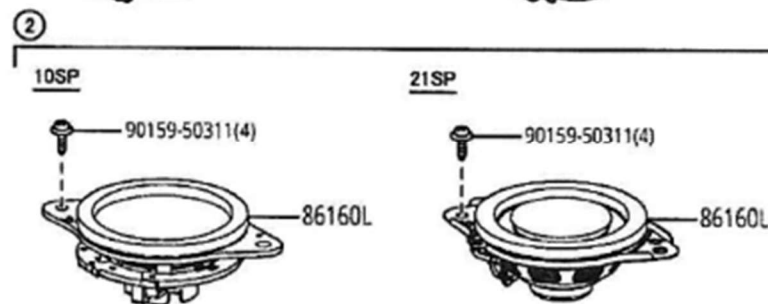
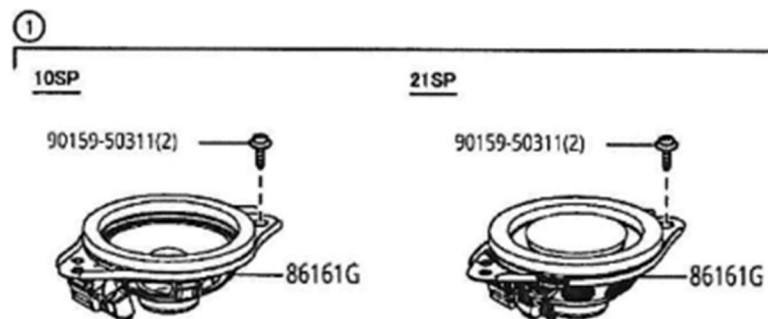
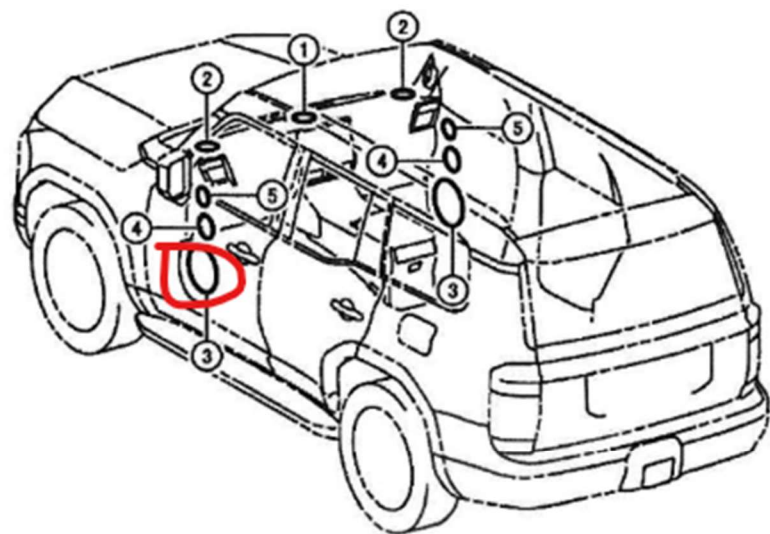
MARK LEVINSON  
SURROUND

Enveloping you in three-dimensional sound that rivals the finest home audio systems, Mark Levinson Surround enables you to unlock a deeper appreciation of sound and experience music in its purest, highest fidelity.

CLARIFI™

By performing composite analysis of the compressed sound-source data in real time, this proprietary technology corrects a range of problems, from dull musical inflections to loss of vocal range.





86A254