


Front Brake Squeal Noise

Service
Category Brake

Section Brake (front)

Market USA

Toyota Supports
ASE Certification 

Applicability

YEAR(S)	MODEL(S)	ADDITIONAL INFORMATION
2024	GX550	
2022 - 2024	LX600	

Introduction

Some 2024 model year GX 550 and 2022 – 2024 model year LX 600 vehicles may exhibit a condition where the front brakes produce a squealing noise when driving forward or in reverse. Follow the Repair Procedure in this bulletin to reduce the possibility of this condition.

Warranty Information

OP CODE	DESCRIPTION	TIME	OFP	T1	T2
BR2404	R & R Front LH & RH Shim Kit, Brake Pad Kit, and Front Discs	1.8	04465-60380	91	99

APPLICABLE WARRANTY

- This repair is covered under the Lexus Basic Warranty. This warranty is in effect for 48 months or 50,000 miles, whichever occurs first, from the vehicle's in-service date.
- Warranty application is limited to occurrence of the specified condition described in this bulletin.

Front Brake Squeal Noise

Parts Information

PART NUMBER		PARTNAME	QTY
PREVIOUS	NEW		
43512-60290	43512-0C040	Disc, Front	2
04465-60380	04465-34040	Pad Kit Disc Brake, Front	1
04945-60100	04945-0C060	Shim Kit, Anti Squeal, Front (Grease Included)	1
04947-60150	04947-60140	Fitting Kit, Disc Brake Front (Anti-rattle Spring)	1
08887-80609		Brake Caliper Grease	1

NOTE

Brake caliper grease is a common service consumable. Verify dealership stock BEFORE ordering. The amount of grease supplied in a single order of brake caliper grease is sufficient to repair 10 vehicles.

Required Tools & Equipment

REQUIRED TOOLS & MATERIAL	PART NUMBER	QTY
Disc Brake Piston Spreader Wide Type	09719-77020	1
	09719-77050	

NOTE

Additional SSTs may be ordered by calling 1-800-368-6787 or by visiting *Home – Service Resources – Lexus Special Service Tools (SSTs)*.

Repair Procedure

- Confirm the condition exists.
Does the vehicle exhibit a condition where the front brakes produce a squealing noise when driving forward or in reverse?
 - YES** — Continue to step 2.
 - NO** — This bulletin does NOT apply. Continue diagnosis using the applicable Repair Manual.
- Remove the tire and wheel, disc, pad, shim kit, and anti-rattle spring.
 - Remove the tire and wheel.
Refer to TIS, applicable model and model year Repair Manual:
 - [2024](#) GX 550:
General – Maintenance – Tire and Wheel – Removal
 - [2022 – 2024](#) LX 600:
General – Maintenance – Tire and Wheel – Removal

3. Confirm that the rotor is NEW and then install the NEW rotor.

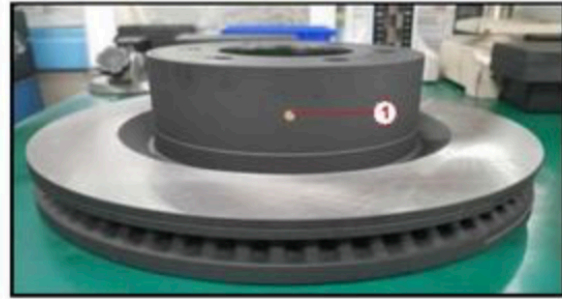
Does the rotor have a gold dot on the hat?

- **YES** — Install the NEW rotor.
- **NO** — Do NOT proceed with repair until a correctly marked rotor is obtained.

Refer to TIS, applicable model and model year Repair Manual:

- [2024 GX 550](#):
*Brake – Brake (Front) –
Front Brake – Installation*
- [2022 – 2024 LX 600](#):
*Brake – Brake (Front) –
Front Brake – Installation*

Figure 1. New Rotor With Gold Dot



1 Gold Dot

Front Brake Squeal Noise

Repair Procedure (continued)

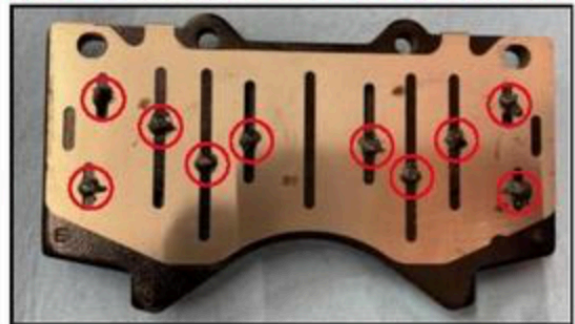
4. Assemble the brake pad and shim kit.
- A. Place the shim plate on the back of the brake pad as shown in Figure 2.
 - B. Apply grease ONLY to the ten locations shown in Figure 2.

NOTE

Use the grease included with the shim kit.

- C. After applying grease, carefully place the solid shim on top.

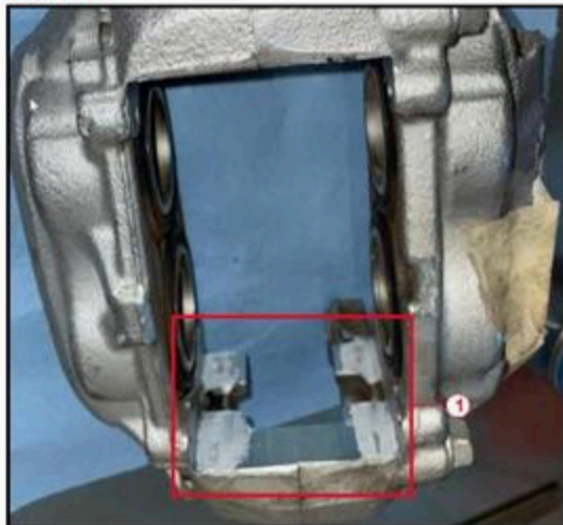
Figure 2. Shim Plate on the Back of the Brake Pad



○ Locations of Grease Application

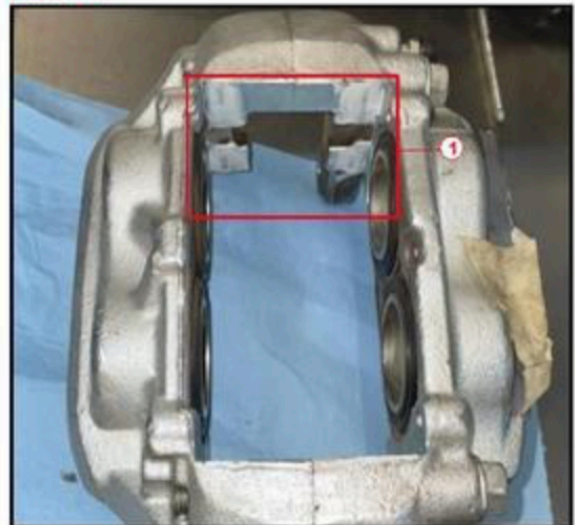
5. Apply brake caliper grease to the cylinder (caliper) areas shown in Figures 3 and 4.

Figure 3.



1 Area of Grease Application

Figure 4.



1 Area of Grease Application

Front Brake Squeal Noise

Repair Procedure (continued)

6. Install the front disc brake pad kit.

Using the disc brake piston spreader wide type, push back the front disc brake pistons, and install the brake pad with the wear indicator and shims inside the caliper as shown in Figure 5.

NOTE

The brake pad with the wear indicator is the inner pad and the brake pad without the wear indicator is the outer pad.

Figure 5. Brake Pad Installation



1	Disc Brake Piston Spreader Wide Type
2	Brake Pad with Wear Indicator
3	Wear Indicator

Front Brake Squeal Noise

Repair Procedure (continued)

7. Install the anti-rattle kit.
 - A. Install the front disc brake anti-rattle pin with a hole (upper side).
 - B. Install the NEW brake anti-rattle spring, then install the front disc brake anti-rattle pin with hole (lower side) as shown in Figure 6.
 - C. Install the pin hold clip to the front disc brake anti-rattle pin with hole and engage the hook to the disc brake cylinder assembly as shown in Figure 7.

Figure 6.



1	Front Disc Brake Anti-rattle Pin (Upper Side)
2	New Brake Anti-rattle Spring
3	Front Disc Brake Anti-rattle Pin (Lower Side)

Figure 7.



1	Pin Hold Clip
---	---------------

8. Install the tire and wheel.

Refer to TIS, applicable model and model year Repair Manual:

 - [2024](#) GX 550:
General – Maintenance – Tire and Wheel – Installation
 - [2022 – 2024](#) LX 600:
General – Maintenance – Tire and Wheel – Installation
9. Test-drive the vehicle and brake at low speeds driving forward and in reverse to confirm the condition is no longer present.

3. Confirm that the rotor is NEW and then install the NEW rotor.

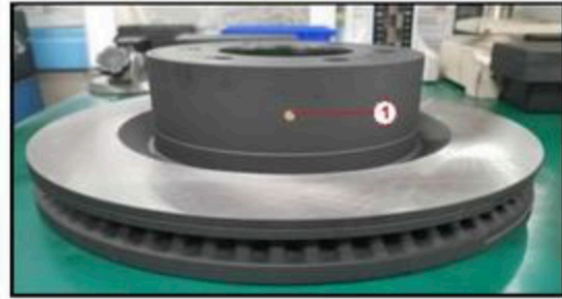
Does the rotor have a gold dot on the hat?

- **YES** — Install the NEW rotor.
- **NO** — Do NOT proceed with repair until a correctly marked rotor is obtained.

Refer to TIS, applicable model and model year Repair Manual:

- [2024 GX 550](#):
*Brake – Brake (Front) –
Front Brake – Installation*
- [2022 – 2024 LX 600](#):
*Brake – Brake (Front) –
Front Brake – Installation*

Figure 1. New Rotor With Gold Dot



1 Gold Dot

Front Brake Squeal Noise

Repair Procedure (continued)

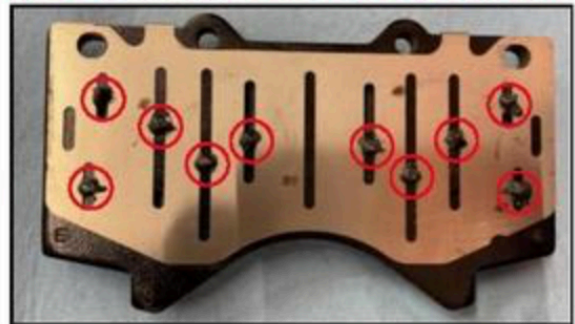
4. Assemble the brake pad and shim kit.
- A. Place the shim plate on the back of the brake pad as shown in Figure 2.
 - B. Apply grease ONLY to the ten locations shown in Figure 2.

NOTE

Use the grease included with the shim kit.

- C. After applying grease, carefully place the solid shim on top.

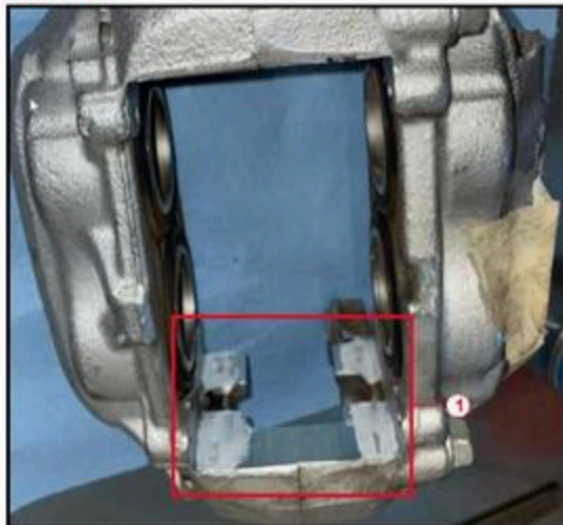
Figure 2. Shim Plate on the Back of the Brake Pad



○ Locations of Grease Application

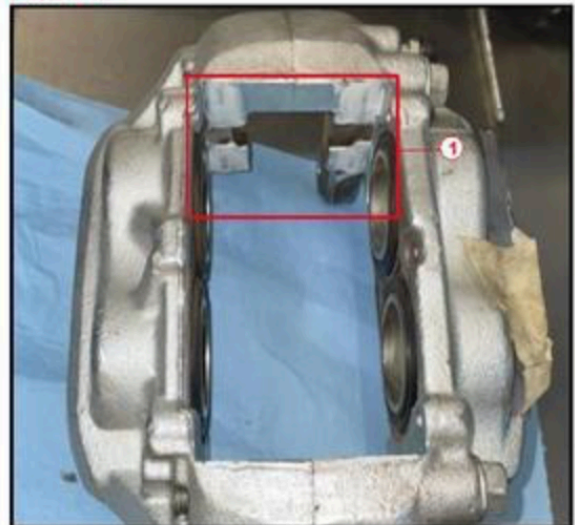
5. Apply brake caliper grease to the cylinder (caliper) areas shown in Figures 3 and 4.

Figure 3.



1 Area of Grease Application

Figure 4.



1 Area of Grease Application

3. Confirm that the rotor is NEW and then install
§ 9.17.1.1

Figure 1. New Rotor With Gold Dot